

Adek Comfort Grip Installation Instructions: 147mm and 295mm profiles

These instructions are designed as a quick and simple reference to using Adek, please ensure that you have also read and understood the Technical Data (available to download from our website) in full before commencing any construction projects.

Substructure:

Normally box or C section up to a maximum of 10mm thickness.

Maximum Joist Spacing (Centre to Center):

Adek Comfort Grip 295: 20

Must not exceed 600mm (425mm if installed at 45° angle).

Adek Comfort Grip 147: 20

Must not exceed 600mm (375mm if installed at 45° angle).

Adek Comfort Grip 295: 30

Must not exceed 1200mm (800mm if installed at 45° angle).

Adek Comfort Grip 147: 30

Must not exceed 600mm (425mm if installed at 45° angle).

Please refer to the Load Span Table available on the website.

Airflow Requirements:

Boards cannot be fitted directly to a flat surface - a bearer system must always be used to elevate the boards.

Board Spacing:

Spacing between boards is 5mm - 8mm.

Butt Joint Gaps:

Use double bearers on butt joints unless the bearer is at least 80mm wide. Spacing at butt joints should be 5mm.

Fixing Method:

Only use Adek board screws.

Fit boards over at least 3 joists with 4 screws at every joist point (2 in each channel) and boards must be screwed down 20mm in from the edge of the board and bearer.

Adek Comfort Grip 295: 20

Max overhang 100mm at 4kN or 150mm at 2kN.

Adek Comfort Grip 295: 30

Max overhang 150mm with up to 4kN.

Adek Comfort Grip 147: 20

No overhang data yet - testing underway.

Adek Comfort Grip 147: 30

No overhang data yet - testing underway.

ALL HOLES MUST BE PRE-DRILLED TO CLEAR SWarf.

Fixing to Steel:

As with all steel, once the Galvanic finish has been pierced it is open to the elements. To combat this we recommend an anti-rust spray or paint should be applied to the screw holes before fixing to prevent rust.

A sacrificial anode may also be used.

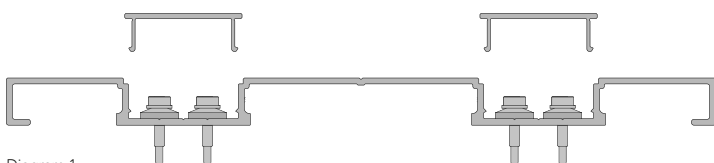


Diagram 1

Screws and Placement:

Screws must be placed in the outer grooves of each section.

Screws must not be fitted any closer than 20mm from the edge of the boards. (See Diagram 1)

Universal Channel Cover:

When attaching Channel Covers, click in over each channel using a rubber mallet to fix securely. (See Diagram 1)

Support Leg Trim:

Must always be fitted once a board has been cut down its length.

(DO NOT RIP BOARDS ANY MORE THAN 147mm AS TESTING NOT CARRIED OUT ON WIDTHS LESS THAN 147mm).

Can only be used in sections marked on Diagram 2, as other areas are not fixed.

Fit first using a rubber mallet and then fix down as per previous instructions.

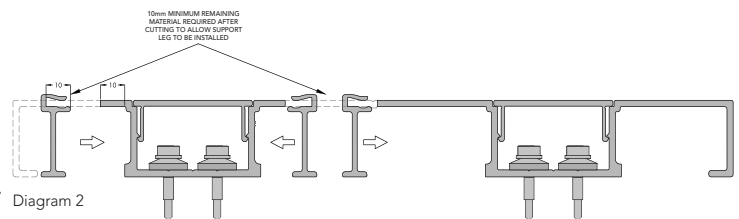
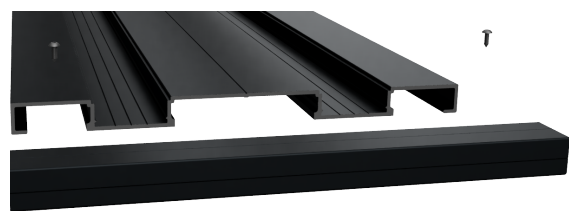


Diagram 2

Universal Edge Trim:

Cut to size and fix to the edge of the decked area.

Pre-drill with a 2.5mm bit and fix using Adek Trim Screws purchased separately.



Cutting Aluminium:

If you intend to cut the Adek board, make sure the piece to cut is securely clamped or fixed to stop any slipping.

Use a suitable aluminium cutting blade in a circular saw or mitre saw.

Apply cutting lubricants to minimise sparks and slippage.

Scuffs and Scratches:

Touch up pens are available for minor scratches.

For heavier damage, replace the Channel Covers if the damage is situated on the, or replace the Adek board and Channel Covers entirely.