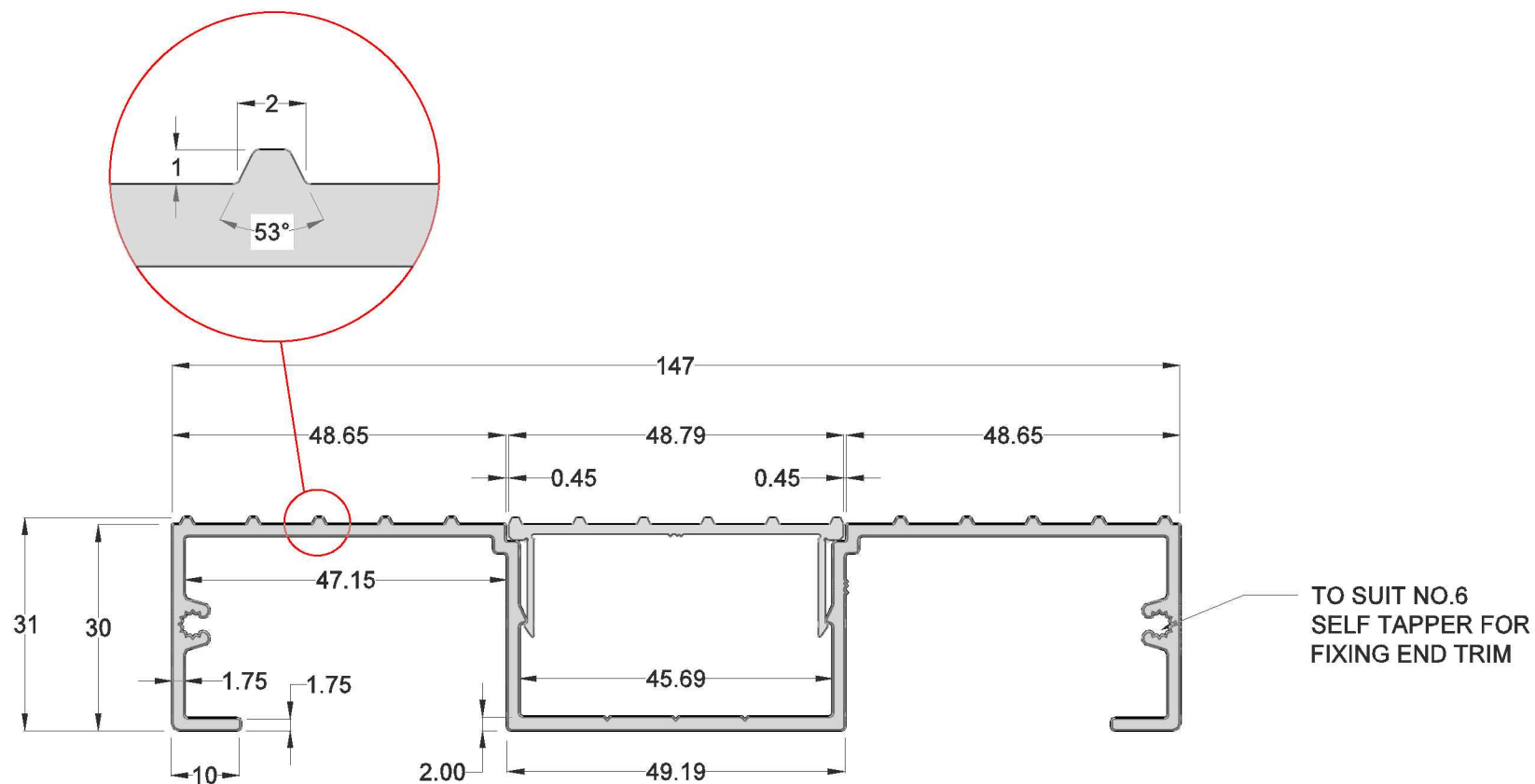
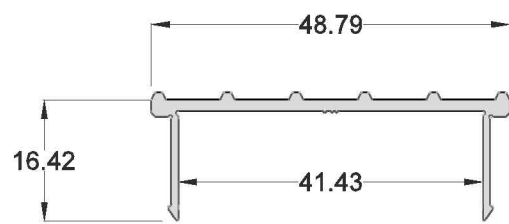


NOTES.
 1. ALL DIMENSIONS ARE IN MILLIMETRES UNLESS OTHERWISE SPECIFIED.
 2. DO NOT SCALE FROM THIS DRAWING



**DECKBOARD
 DETAILS**



**CHANNEL COVER
 DETAILS**

SPECIFICATIONS

- CLASS A2-s1
- MATERIAL: ALLOY 6063
- PROFILE DIMENSIONS (DECKBOARD): 30 (31 O/A) x 147
- COLOURS: ANTHRACITE*
- AVAILABLE IN 4m, 5m & 6m LENGTHS*

*BESPOKE LENGTHS & COLOURS AVAILABLE



ISSUE	DESCRIPTION	ORIG.	APPR.	DATE	 Adek Class A Fire Rated a product by www.ecodek.co.uk	DESCRIPTION	WEIGHT	PROJECTION IF APPLICABLE	DRAWN	CHECKED	APPROVED	1ST ISSUE
1	FIRST ISSUE	MDR		24-08-2020			A30 ENHANCED GRIP 147mm WIDE ADEK BOARD GENERAL ASSEMBLY	1.46 kg/m		MDR		
							SCALE	DIMENSION UNITS	DRAWING No.			ISSUE
							1:1@A3	mm	ADK-A30EG-147-V1			1
							TOLERANCE					
							± 0.5					